

Phospho-AMOT(Y599) Antibody
Affinity Purified Rabbit Polyclonal Antibody (Pab)
Catalog # AP3791a

Specification

Phospho-AMOT(Y599) Antibody - Product Information

Application	DB,E
Primary Accession	Q4VCS5
Other Accession	Q8VHG2 , NP_001106962.1
Reactivity	Human
Predicted	Mouse
Host	Rabbit
Clonality	Polyclonal
Isotype	Rabbit IgG
Calculated MW	118085

Phospho-AMOT(Y599) Antibody - Additional Information

Gene ID 154796

Other Names

Angiomotin, AMOT, KIAA1071

Target/Specificity

This AMOT Antibody is generated from rabbits immunized with a KLH conjugated synthetic phosphopeptide corresponding to amino acid residues surrounding Y599 of human AMOT.

Dilution

DB~~1:500

E~~Use at an assay dependent concentration.

Format

Purified polyclonal antibody supplied in PBS with 0.09% (W/V) sodium azide. This antibody is purified through a protein A column, followed by peptide affinity purification.

Storage

Maintain refrigerated at 2-8°C for up to 2 weeks. For long term storage store at -20°C in small aliquots to prevent freeze-thaw cycles.

Precautions

Phospho-AMOT(Y599) Antibody is for research use only and not for use in diagnostic or therapeutic procedures.

Phospho-AMOT(Y599) Antibody - Protein Information

Name AMOT

Synonyms KIAA1071

Function Plays a central role in tight junction maintenance via the complex formed with ARHGAP17, which acts by regulating the uptake of polarity proteins at tight junctions. Appears to regulate endothelial cell migration and tube formation. May also play a role in the assembly of endothelial cell-cell junctions. Repressor of YAP1 and WWTR1/TAZ transcription of target genes, potentially via regulation of Hippo signaling-mediated phosphorylation of YAP1 which results in its recruitment to tight junctions (PubMed:[21205866](#)).

Cellular Location

Cell junction, tight junction. Note=Localized on the cell surface. May act as a transmembrane protein

Tissue Location

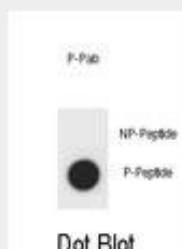
Expressed in placenta and skeletal muscle. Found in the endothelial cells of capillaries as well as larger vessels of the placenta.

Phospho-AMOT(Y599) Antibody - Protocols

Provided below are standard protocols that you may find useful for product applications.

- [Western Blot](#)
- [Blocking Peptides](#)
- [Dot Blot](#)
- [Immunohistochemistry](#)
- [Immunofluorescence](#)
- [Immunoprecipitation](#)
- [Flow Cytometry](#)
- [Cell Culture](#)

Phospho-AMOT(Y599) Antibody - Images



Dot blot analysis of AMOT Antibody (Phospho Y599) Phospho-specific Pab (Cat. #AP3791a) on nitrocellulose membrane. 50ng of Phospho-peptide or Non Phospho-peptide per dot were adsorbed. Antibody working concentrations are 0.6ug per ml.

Phospho-AMOT(Y599) Antibody - Background

This gene belongs to the motin family of angiostatin binding proteins characterized by conserved coiled-coil domains and C-terminal PDZ binding motifs. The encoded protein is expressed predominantly in endothelial cells of capillaries as well as larger vessels of the placenta where it may mediate the inhibitory effect of angiostatin on tube formation and the migration of endothelial cells toward growth factors during the formation of new blood vessels. Alternative splicing results in multiple transcript variants encoding different isoforms.

Phospho-AMOT(Y599) Antibody - References

Bailey, S.D., et al. Diabetes Care 33(10):2250-2253(2010) Heller, B., et al. J. Biol. Chem.

285(16):12308-12320(2010) Talmud, P.J., et al. Am. J. Hum. Genet. 85(5):628-642(2009) Gagne, V., et al. Cell Motil. Cytoskeleton 66(9):754-768(2009) Zheng, Y., et al. Circ. Res. 105(3):260-270(2009)